



# CREATION 70 CLIC

High Traffic Interlocking  
Luxury Vinyl Tiles

**Gerflor**<sup>®</sup>

# Simplified Installation Exclusive Interlocking System



1713 Backyard Taupe



1603 Curton Stone Clear



1604 Curton Stone Taupe

The enhanced Creation 70 Clic delivers an easier, more efficient installation. The angular long side installs with less noise and greater assurance while the vertical click short side resists traffic and is water tight.

- Ideal for overnight renovations.
- Installs over existing surfaces like VCT and ceramic tile.
- Minimizes downtime and lost revenue.

Colors displayed on this panel are available in 15.37" X 28.70" format.

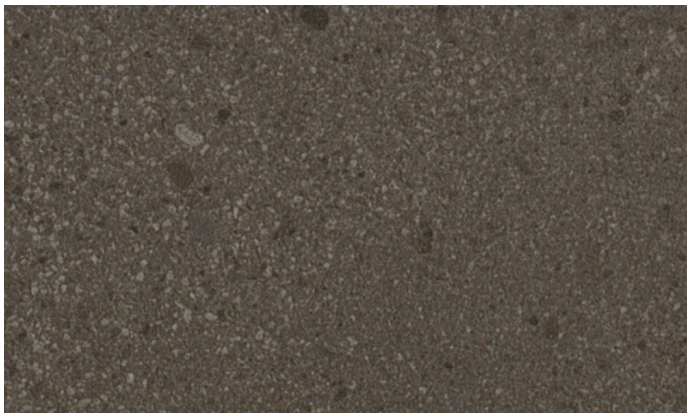
# Smarter Design Unmatched Performance



1723 Backyard Grey



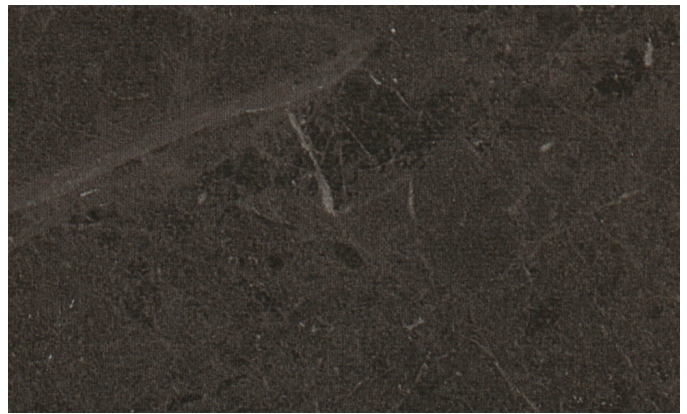
1283 Urban Street Light (Formerly Pure Concrete Light)



1711 Backyard Dark



1284 Urban Street Medium (Formerly Pure Concrete Medium)



1722 Marble Black

## Refined Realism

Inspired by the latest design trends, this collection brings together beautifully balanced shades and woodgrains carefully curated to create perfect harmony in any space.

Colors displayed on this panel are available in 15.37" X 28.70" format.



1702 Linear Wood Honey



0870 Quartet Honey



1703 Linear Wood Nature



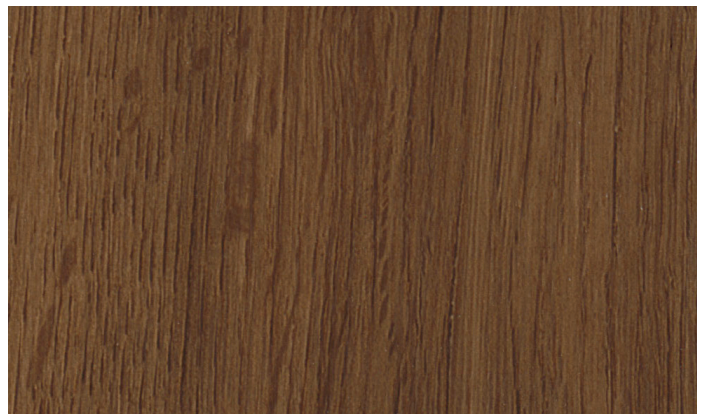
1715 City Oak Beige



0545 Quartet Natural (Formerly Serena)



0441 Honey Oak



1597 Quartet Dark Brown

Colors displayed on this panel are available in 8.35" X 48.78" format.



0577 Albion



0374 Ballerina



0504 Twist (Formerly Midwest)



1715 City Oak Beige



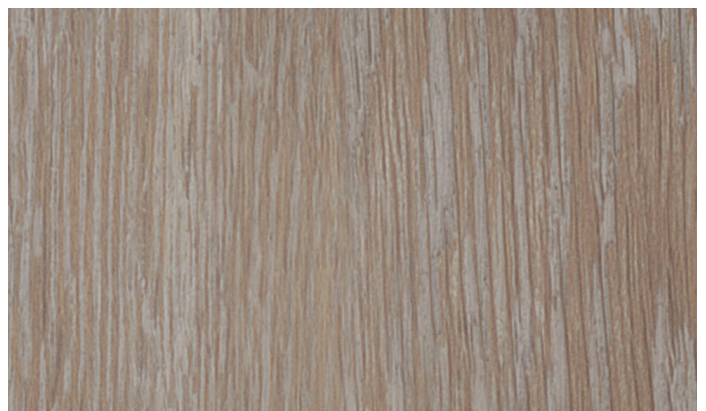
0455 Long Board (Formerly Moon Island)



0456 Ranch (Formerly Portobello)



0503 Quartet



0584 White Lime

Colors displayed on this panel are available in 8.35" X 48.78" format.



1606 Cedar Golden



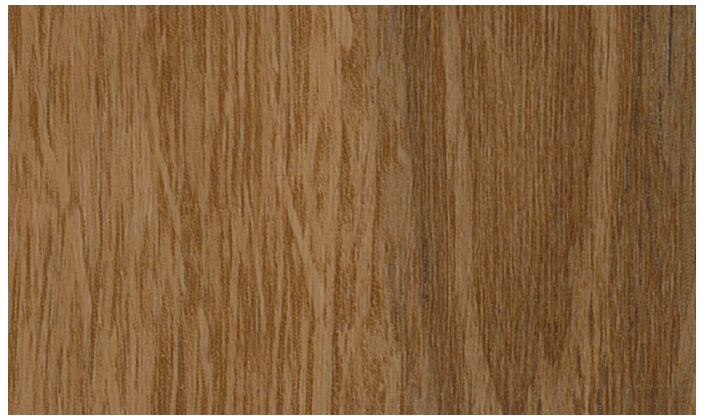
1607 Cedar Natural



0850 Cedar Brown



1718 City Oak Grey



1606 Cedar Golden



1717 City Oak Dark Brown



1605 Cedar Dark Brown

Colors displayed on this panel are available in 9.45" X 57.52" format.



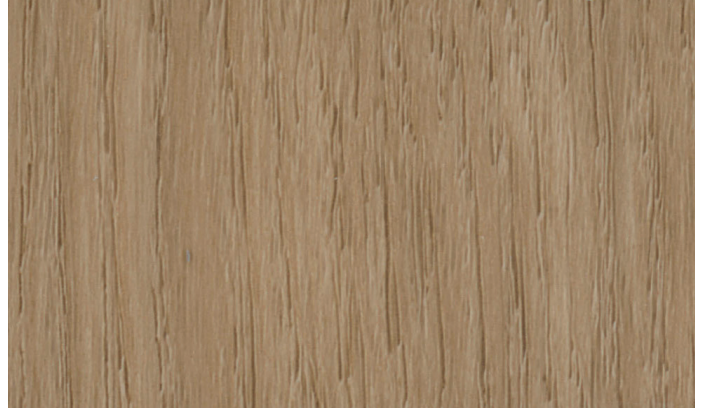
1720 Onka Carmel



1056 Onka Pearl



1273 Lounge Oak Natural EIR



1272 Lounge Oak Beige EIR



1271 Lounge Oak Golden



1271 Lounge Oak Golden EIR



1274 Lounge Oak Chestnut EIR

Colors displayed on this panel are available in 9.45" X 57.52" format.



GERFLOR USA  
877-437-3567  
info@gerflorusa.com  
gerflorusa.com



GENA0160

DESCRIPTION	STANDARDS	REQUIREMENTS	CREATION 70 CLIC		
<b>PRODUCT DESCRIPTION</b>					
Reference Specification*	ASTM F1700	-	Class III Type B		
Construction	-	-	Luxury Vinyl Tile		
Surface Treatment/Maintenance	-	-	ProtecShield™		
Gauge Total Thickness	ASTM F386	-	0.20" (5 mm)		
Wearlayer Thickness	ASTM F410	-	28 mil (0.7 mm)		
Backing	ASTM F1303	-	100% Recycled Material		
Plank & Tile Sizes	-	-	8.35" x 48.78"	9.45" x 57.52"	15.31" x 28.70"
Plank & Tile per Carton	-	-	7	6	6
Sq Ft Per Carton	-	-	19.8 ft <sup>2</sup>	22.65 ft <sup>2</sup>	18.31 ft <sup>2</sup>
<b>PERFORMANCE</b>					
Dimensional Stability	ASTM F2199	-	Meets Requirements		
Indentation - Residual	ASTM F1914	≤ -8%	Meets Requirements		
Flexibility	ASTM F137	> 1"	Meets Requirements		
Size & Squareness	ASTM F2421	-	Meets Requirements		
Chemical & Stain Resistance	ASTM F925	-	Meets Requirements		
Resistance to Heat	ASTM F1514	ΔE ≤ 8	Meets Requirements		
Resistance to Light	ASTM F1515	ΔE ≤ 8	Meets Requirements		
Coefficient of Friction	ASTM D2047	-	0.67 (leather) / 0.80 (neolite)		
Impact Insulation (IIC)	ASTM E989 (ASTM E492)	-	IIC 46		
Fire Rating - Flame Spread	ASTM E648	Class 1	Meets Requirements		
<b>ENVIRONMENT HEALTH &amp; SAFETY</b>					
Manufacturing Plant Certifications	ISO 9001, 14001, 50001	-	Quality, Environment, Energy		
Environmental Product Declaration (EPD)	LEED v5	-	Product-Specific Type III		
No Harmful Chemicals	LEED v5	-	100% REACH Compliant		
Sourcing of Raw Material: Recycled Content	Average Pre-Consumer Content	-	33%		
Indoor Air Quality / Low Emitting Materials	California Standard 01350	-	FloorScore® Certified		
Production Waste	LEED v5	-	100% Manufacturing Waste Recycled		
TVOC after 28 days	ISO 16000-6	-	<10µg/m <sup>3</sup>		
<b>WARRANTY</b>	12-year limited manufacturer warranty when installed in accordance with Gerflor's installation instructions on gerflorusa.com				

\*Rubber leaves indelible stains on synthetic floorings: do not use mats with rubber backing and replace tubular furniture feet with those made of PVC or polyamide. Place mats of sufficient length at entrances to reduce outside sources of dirt.

For the most current version of this technical datasheet, refer to [www.gerflorusa.com](http://www.gerflorusa.com).

CREATION 70 CLIC USA Binder - 2026

### Creation 70 Clic Packaging Details

WIDTH(IN)	LENGTH(IN)	SQF/BOX	PLANK/BOX	WGT/BOX
8.35"	48.78"	19.80	7	31.13 lbs
9.45"	57.52"	22.65	6	35.52 lbs
15.31"	28.70"	18.31	6	28.75 lbs

